

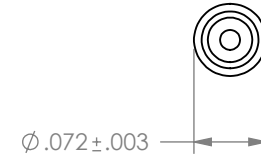
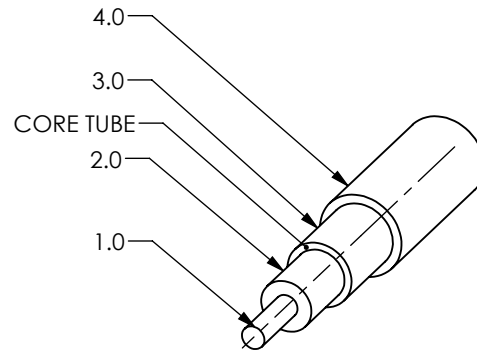
THE INFORMATION CONTAINED IN THIS DRAWING IS THE SOLE PROPERTY OF JOY SIGNAL TECHNOLOGY ANY REPRODUCTION IN PART OR WHOLE WITHOUT THE WRITTEN PERMISSION OF JOY SIGNAL TECHNOLOGY IS PROHIBITED.


REV	DESCRIPTION	DATE	INITIAL

COAX SPECIFICATIONS

- 1.0 SIGNAL CONDUCTOR:  
 SIZE: 26 AWG  
 MATERIAL: SILVER PLATED COPPER  
 CONSTRUCTION: 7 X 34  
 OD (NOM.): .195"
- 2.0 INSULATION:  
 MATERIAL: 2 @ PFA,  
 WALL THICKNESS:  
 OD: .00475", BLACK  
 TEMPERATURE RATING:
- CORE TUBE:  
 MATERIAL: FEP, .0045" WALL THICKNESS  
 OD:  $\phi$ .0435"
- 3.0 SHIELD:  
 SIZE: 38 AWG, 16 CARRIER, 10.1 PICKS/INCH  
 MATERIAL: SPC BRAID SILVER PLATED COPPER  
 COVERAGE (MIN.): 95%
- 4.0 JACKET:  
 MATERIAL: FEP  
 WALL THICKNESS (NOM.): .006"  
 OD:  $\phi$ .072 $\pm$ .003  
 TEMPERATURE RATING:
- 5.0 ELECTRICAL CHARACTERISTICS:  
 IMPEDANCE: 50 ohms +2/-1 ohms  
 PROPAGATION DELAY: 1.14  $\pm$ 0.01 ns/ft  
 DIELECTRIC WITHSTANDING VOLTAGE:
- 6.0 COLOR:  
 DIELECTRIC:  
 JACKET: BLUE

SPECIAL NOTES: SPOOL OD: 12"MAX  
 SPOOL WIDTH: 9"MAX  
 SPINDLE DIA: 1-1/2"  $\pm$ .25"



ITEM NO.	PART OR IDENTIFYING NO.	NOMENCLATURE OR DESCRIPTION	MATERIAL SPECIFICATION	QTY REQD
PARTS LIST				
UNLESS OTHERWISE SPECIFIED DIMENSIONS ARE IN INCHES TOLERANCES ARE: FRACTIONS DECIMALS ANGLES .XX : $\pm$ .01 .XXX : $\pm$ .005		CAD GENERATED DRAWING, DO NOT MANUALLY UPDATE	 COAX,50 OHM,26 AWG,BLU,BRD SHLD 50HCX-24 TEMP FLEX HISPEED	
MATERIAL SEE NOTES		APPROVALS DATE		
FINISH --		DRAWN VW 10/28/5		
NEXT ASSY USED ON		CHECKED LM 11/14/5		
APPLICATION DO NOT SCALE DRAWING		RESP ENG		
		MFG ENG	SCALE	DWG. NO. 790171
		QUAL ENG LM 10/28/5	CAD FILE: 790171	REV. 1
			SHEET 1 OF 1	